

St. Paul School

1212 - 12 Avenue North

Lethbridge, AB T1H 6W1

Phone: 403-328-0611

Fax: 403-327-0816

www.holyspirit.ab.ca/st.paul

Principal: Mr. Gerry Muldoon

Associate Principal: Mrs. Tina Delinte



Important

St. Paul School Reentry Guidelines

Bussing Changes:

To address and conform to all distancing guidelines set by the Alberta Government, the Holy Spirit Catholic School Division will **ONLY** be providing bus transportation to and from school for students who reside **2.4kms or further** from their designated school.



Visitors and Access to the School:

- Access to the school is **by appointment only**. Principals will approve all visits. Please call our office if you would like to make an appointment @ 403-328-0611.
- All visitors must sign in and out at the office with name, phone number, date, time in, time out, and areas visiting.
- All visitors must complete the [Alberta Daily Screening Tool](#).
- Parents/Caregivers are **NOT** permitted to attend classrooms, or walk throughout the school.
- Visitors who have travelled outside of Canada or had any symptoms in the past 14 days should **NOT** enter the school.

Food and Water

Please remember to send lunches for your child that do **NOT** require to be reheated as we will **NOT** be providing microwaves for student use to limit any cross contamination and maintain all distancing protocols during lunch time.



Use of Water Dispensers and Water Fountains:

- Students and staff should bring their **own water bottles**.
- Fill stations (water dispensers) can be used to fill individual water bottles **ONLY**.
- Do **NOT** use fountain or mouthpiece features of the water dispensers.
- Do **NOT** use water fountains.



New School Protocols/Procedures:

When your child is sick at school:

If a child becomes symptomatic while at school he/she will be asked to wear a non-medical mask if they are able and isolated in the designated sick room. The parent/guardian will be notified to come and pick up the student immediately. Parents will be encouraged to access COVID-19 testing by accessing the [Alberta Health COVID-19 Self-Assessment Tool](#).

All items the student touched/used while in isolation will be cleaned and disinfected as soon as the child has been picked up.

Alberta Daily Self Screening Tool:

For the safety of all Holy Spirit Staff and Students, we are asking parents to perform a daily self screening of students to be aware of the signs and symptoms of COVID-19 and when to stay home.

If your child presents with any of the symptoms or answers "YES" to any of the questions in the attached screening questionnaire, do NOT enter the school at this time and proceed to the COVID-19 Self Assessment Tool to determine whether you will need to be tested for COVID-19.

Alberta Daily Screening Tool:

https://drive.google.com/file/d/13UeNtDvMur3aYF_Owhxp2sgx5E7xiEli/view

COVID-19 Self Assessment Tool:

<https://myhealth.alberta.ca/Journey/COVID-19/Pages/Assessment.aspx>

Medical History/Allergies:



For school staff to have a better idea of what type of medical conditions/allergies are common in your child we are encouraging all families to update the office with your child's medical history/allergies. This information will help us determine the course of action when symptoms are presented during school hours.

Hand Sanitizer:

Please note, to help keep perfume/fragrance type allergies or sensitivities at a minimum, we are asking parents NOT to send personal bottles of hand sanitizer with their child at this time. The school will have sanitizing stations in all areas of the school.



New Protocols/Procedures:

At-Home Learning

If you have indicated that you'd like to proceed with at-home learning for your child(ren), please be sure to register at the following link:

https://docs.google.com/forms/d/1QVy5CasE4bB4A5G1ORvp5UjtZEfpE33F80zk39ZDV1E/viewform?ts=5f34610b&edit_requested=true

If at any point of the school year you decide you'd like your child(ren) to begin attending classes in school it is required that you give the office 30 days notice. You can do so by contacting the office at 403-328-0611



Cleaning:

Please note: Our staff will be taking the utmost care in our facility to ensure that all students have a clean and safe learning environment.



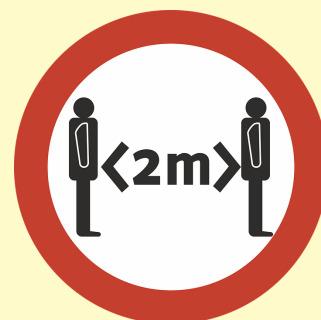
Drop Off/Pick up:

Drop off and pick up of children will be outside ONLY. Each class has been designated an entrance to use. Please see the attached maps for this important information on where to drop off and pick up your child(ren).

Physical Distancing

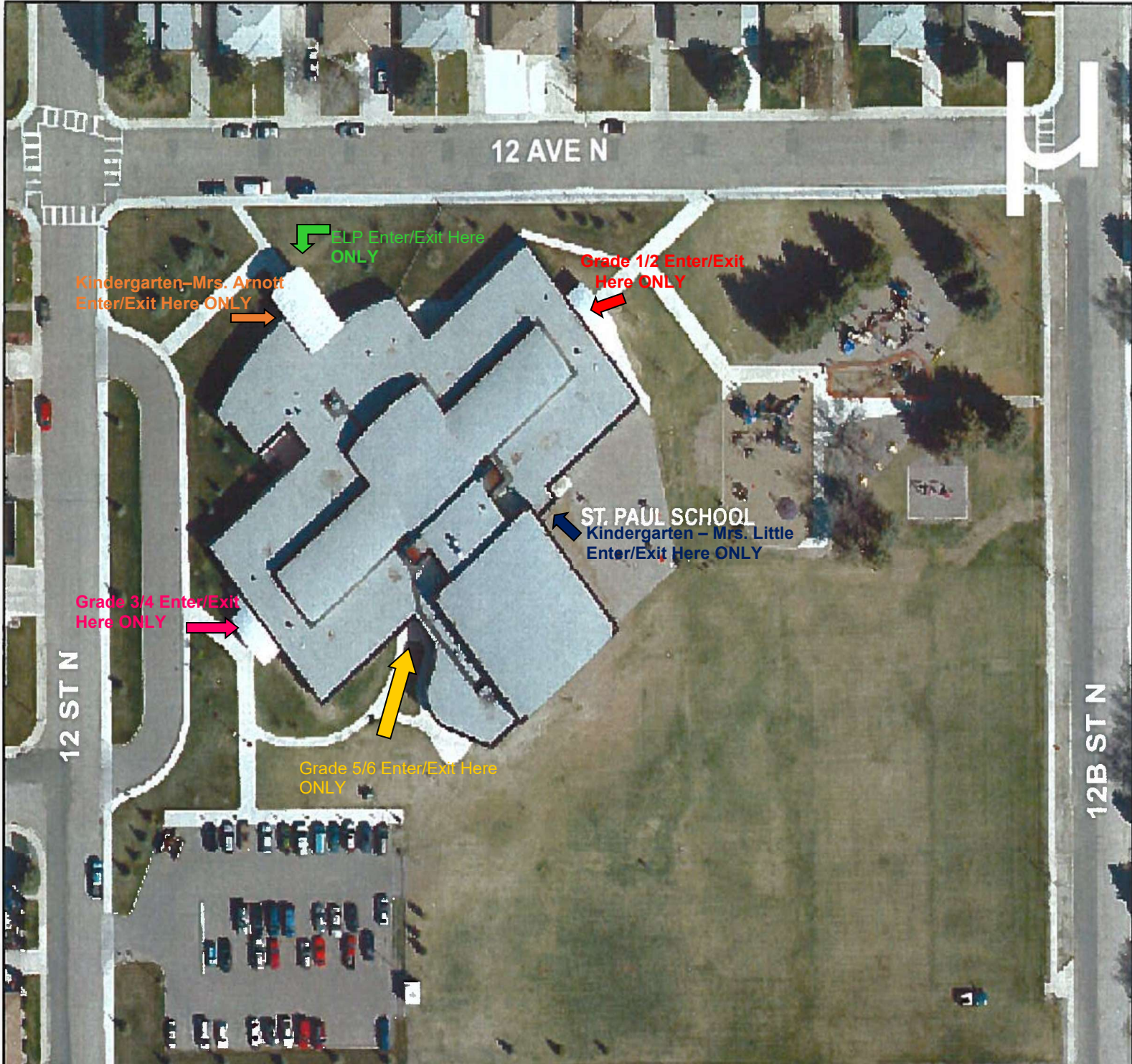
We are asking everyone to do their part at this time and maintain the appropriate physical distance, as well as follow all posted signs and remember that not all facilities in our school will be open to the public.

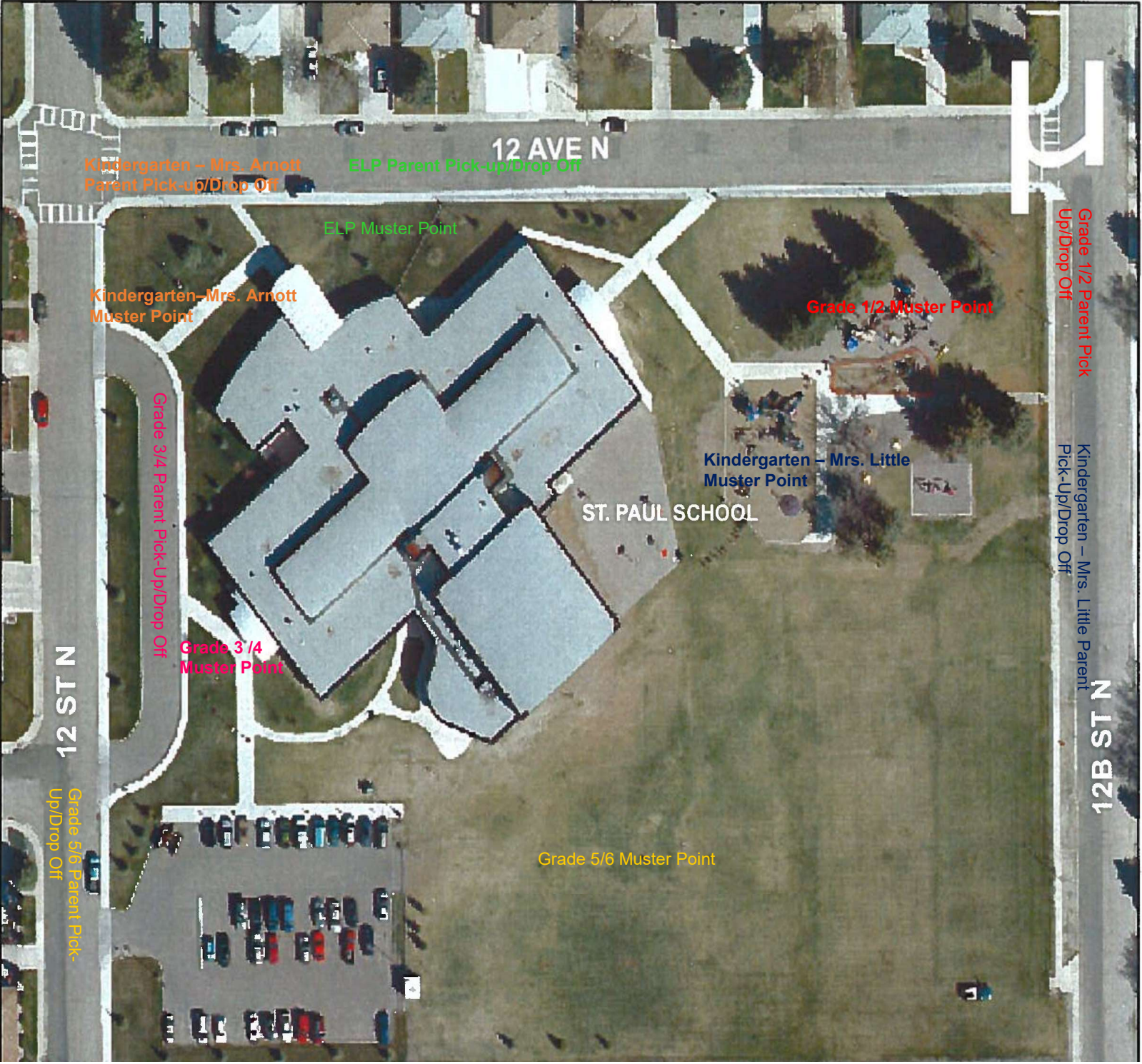
Our school is also taking all precautions to maintain distancing within the school, classrooms, and sick rooms. We will not be hosting assemblies or any other in-person gatherings at the school at this time.





School Maps for Entry/Exit and Parent Pick Up/Muster Points
For the 2020/21 School Year





12 AVE N

Kindergarten - Mrs. Arnott
Parent Pick-up/Drop Off

ELP Parent Pick-up/Drop Off

ELP Muster Point

Kindergarten - Mrs. Arnott
Muster Point

Grade 1/2 Muster Point

Grade 1/2 Parent Pick
Up/Drop Off

Kindergarten - Mrs. Little Parent
Pick-Up/Drop Off

12 ST B 21

Kindergarten - Mrs. Little
Muster Point

ST. PAUL SCHOOL

Grade 3/4 Parent Pick-Up/Drop Off

Grade 3/4
Muster Point

12 ST N

Grade 5/6 Parent Pick-
Up/Drop Off

Grade 5/6 Muster Point

COVID-19 ALBERTA HEALTH DAILY CHECKLIST

Overview

This tool has been developed to support activity organizers, employers, businesses and facility operators in reducing the risk of transmission of COVID-19 among attendees/staff. The tool is meant to be used to assist with assessing attendees who may be symptomatic, or who may have been exposed to someone who is ill or has confirmed COVID-19.

Attendees should fill out this checklist prior to participating in the activity or program. If an individual answers **YES** to any of the questions, they **must not** be allowed to attend or participate in the activity or program. Children and youth will need a parent to assist them to complete this screening tool.

As the COVID-19 pandemic continues to evolve, this screening tool will be updated as required.

Screening Questions

| 1. | Does the attendee have any new onset (or worsening) of any of the following symptoms: | CIRCLE ONE | |
|----|--|------------|----|
| | • Fever | YES | NO |
| | • Cough | YES | NO |
| | • Shortness of Breath / Difficulty Breathing | YES | NO |
| | • Sore throat | YES | NO |
| | • Chills | YES | NO |
| | • Painful swallowing | YES | NO |
| | • Runny Nose / Nasal Congestion | YES | NO |
| | • Feeling unwell / Fatigued | YES | NO |
| | • Nausea / Vomiting / Diarrhea | YES | NO |
| | • Unexplained loss of appetite | YES | NO |
| | • Loss of sense of taste or smell | YES | NO |
| | • Muscle/ Joint aches | YES | NO |
| | • Headache | YES | NO |
| | • Conjunctivitis (commonly known as pink eye) | YES | NO |
| 2. | Has the attendee travelled outside of Canada in the last 14 days? | YES | NO |
| 3. | Has the attendee had close contact* with a confirmed case of COVID-19 in the last 14 days? | YES | NO |
| 4. | Has the attendee had close contact with a symptomatic** close contact of a confirmed case of COVID-19 in the last 14 days? | YES | NO |

* Face-to-face contact within 2 metres. A health care worker in a occupational setting wearing the recommended personal protective equipment is not considered to be a close contact.

** 'Ill/symptomatic' means someone with COVID-19 symptoms on the list above.